



# Prescot & Whiston

## Neighbourhood Plan

If you need this document in another language, please [contact us](#).

# Contents

About the Area

Community Events & Clubs

Local Facilities

Travel

Action Plan

Local Councillors

Community Action Days

Planned Improvements

Regeneration & Development

Neighbourhood Statistics

Staff Members

Customer Board

Click here to find out  
about applying online  
for our community  
funding Bright Ideas  
Fund



@prima\_grp



@prima\_grp



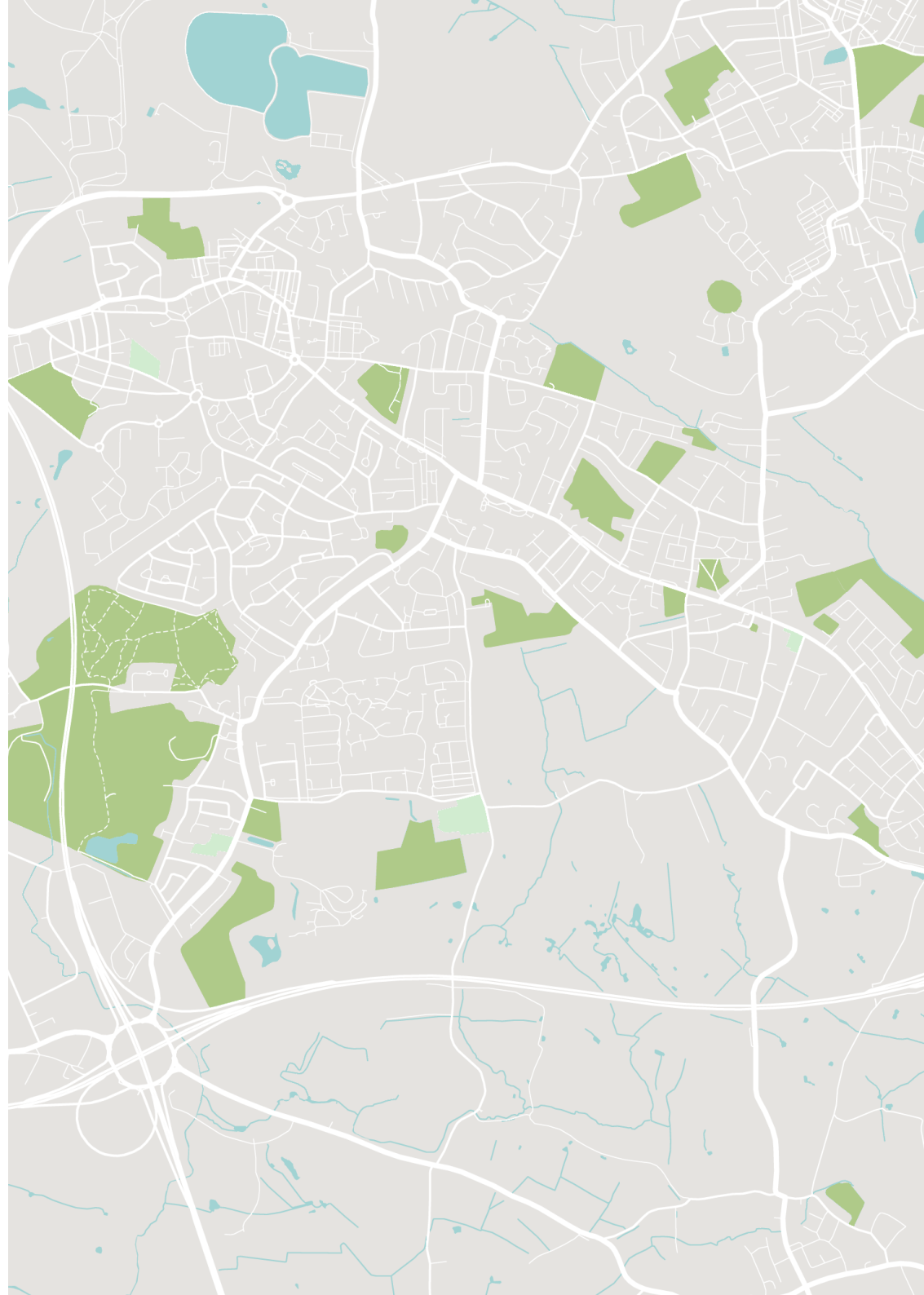
Prima Group



@PrimaGroupHousing

## Sign Up to Our Local Jobs and Training Bulletin

Head to [www.primagroup.org/local-jobs](http://www.primagroup.org/local-jobs) to sign up to our regular email bulletin and find out about jobs and training opportunities near you.



## About the Area

Prescot is a town and civil parish within the Metropolitan Borough of Knowsley in Merseyside, England. Historically part of Lancashire, it lies about eight miles to the east of Liverpool city centre. At the 2001 Census, the civil parish population was 11,184.

Whiston is a large village and civil parish within the Metropolitan Borough of Knowsley in Merseyside, England. It is located 8 miles east of Liverpool. The population was recorded as 13,629 at the 2001 Census, which increased to 14,263 at the 2011 Census.

Whiston consists of the Whiston North and Whiston South wards of the Metropolitan Borough of Knowsley. The North and South wards are separated by the Liverpool to Manchester Railway, which runs directly through the town.

## Community Clubs & Events

- **[Boxing Club](#)** - Higherside ABC is now based in the Fitness Suite at Whiston Town Hall.
- **W.I.K.E.D** - Street dance club. Located at George Howard Centre.
- **[Lickers Lane Pensioners Club](#)** - Monday lunchtime there is a gathering at The George Howard Centre for the Lickers Lane Pensioners Club Lunch.

Find out about more community clubs and events in Whiston [here](#).

## Local Facilities

- **Shops nearby** - Tesco and Asda (walkable distance).
- **[Whiston Hospital](#)**
- **Two Librarys** at Dragon Lane and High St Prescott
- **Three train stations** - Prescot, Whiston, Eccleston Park and Rainhill all less than a mile away.
- **[Henley Park](#)** - A quiet and tranquil park close to Whiston Hospital that includes a children's play area.
- **[Cables Retail Park](#)** - A fabulous retail park with large stores and free parking.
- **Historic town centre** - A historic market dating back to 1333 with lots of independent shops and prominent restaurants and bars.
- **[Shakespeare North Playhouse](#)** - State of the art £20m development including an education centre and outdoor performance area at the heart of town.
- **[Prescot Cables Football Club](#)** - A supporter-owned football club based in the heart of the town that play in Northern Premier League Division and have a ground capacity of 3000 people.
- **[Prescot Soccer Centre](#)** - Knowsley leisure facility hosting a state-of-the-art gym and 3G pitches for hire.
- **[Prescot Town Hall](#)** - Purpose community building closely situated near the town centre including activities such as martial arts classes, aerobics, over 55s clubs and adult learning classes.
- **[Tennis Centre](#)** - A members based tennis that dates back to 1904 with five tennis courts for hire.



# Travel

Prescot and Whiston are well connected to Liverpool City Centre and beyond.

Prescot and Whiston train stations are just a short walk away from our properties in the area. These stations link up with Liverpool Lime Street which has trains that travel all over the UK. Find out more [here](#). Prescot station also has trains that go to Wigan North Western.

There are also plenty of bus routes into Liverpool city centre and around the local area.

Liverpool John Lennon Airport is also just a short drive away.

Merseyrail

Arriva



Photo by Raymond Knapman

# Action Plan

Action	Partners/Staff	Details	Outcomes
<p>Establish new links with not-for-profit groups and local amenities   such as the Salvation Army and Prescot Soccer to increase our presence in the area.</p>	<ul style="list-style-type: none"><li>• Housing Officer</li></ul>	<p>Create new links with organisations to widen our knowledge to support tenants with knowledge of local groups and activities both for young and old.</p>	<p>Increased knowledge of assets in the nearby community with a view of promoting these to our new/ existing tenants.</p>
<p>Work with the Community Regeneration Officer to offer a greater range of employment, learning and training opportunities that meet their needs of local people as well as increasing the number of people signed up to the our employment, training and skills bulletin.</p>	<ul style="list-style-type: none"><li>• Housing Officer</li><li>• Community Regeneration Officer</li></ul>	<p>Create a proactive approach to support tenants by building the awareness of support that is available from Prima Group. Utilising new technologies such as SMS &amp; App to help widen knowledge.</p>	<p>Increased numbers of tenants accessing support and benefiting from a wide range of tailored support.</p>

# Action Plan

Action	Partners/Staff	Details	Outcomes
<p>Work with tenant look at options on reducing their own energy bills by providing information and support on how to be energy efficient.</p>	<ul style="list-style-type: none"><li>• Housing Officer</li><li>• Tenancy Sustainment Officer</li><li>• Energy Project Plus</li></ul>	<p>Widen our current support for tenants through our established referral for tenants to Energy Projects Plus to assist tenant with access to energy saving equipment, grants and knowledge on reducing energy bills.</p>	<p>Tenants have better access to quality information to make informed choices that may help them financially and improve the environment.</p>
<p>Work with Knowsley Council about redevelopment in the area.</p>	<ul style="list-style-type: none"><li>• Housing Officer</li><li>• Tenancy Sustainment Officer</li><li>• Knowsley Council</li></ul>	<p>Work together with stakeholders to shape and promote the benefits of the regeneration in the area through resident liaison and Prima Group publications.</p>	<p>Better understanding of local programmes / activities due to the investment in the area as well as highlighting changes that will make the area an attractive place to live and work.</p>

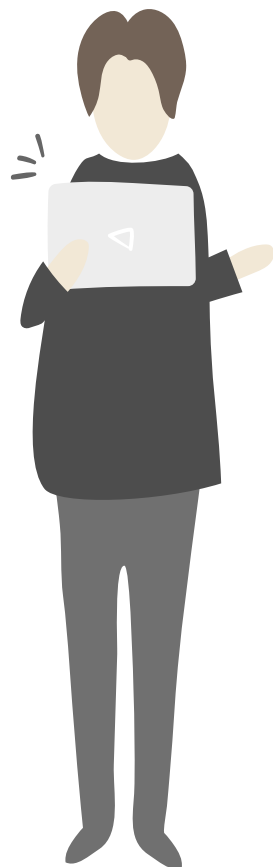
## Local Councillors

A councillor's primary role is to represent their ward or division and the people who live in it. Councillors provide a bridge between the community and the council. As well as being an advocate for local residents and signposting them to the right people at the council, councillors need to keep them informed about the issues that affect them.

Councillors have to balance the needs and interests of residents, the political party they represent (if any) and the council.

Our properties in Prescot and Whiston fall into a few different constituencies so there are multiple councillors you can contact depending on where you live.

A full list of local councillors can be found [here](#).



## Community Action Days

We regularly host clean-up days, estate walkabouts and community door knocks to help you remove any unwanted items from your home and to make sure we are hearing any concerns you may have about your area.

There are currently no planned community action days for Prescot and Whiston. Please keep checking our website [here](#) to find out when the next one will be.

## Planned Improvements

Our planned improvements schedule has been heavily disrupted due to the ongoing COVID-19 crisis.

The majority of our programmed work was kitchen and bathroom replacements and these have now been postponed for this year now with the onset of the second wave of COVID-19.

It's likely that works planned for 20/21 will need to be phased over 21/22 and 22/2023. We will contact you directly with more information if you were due to have work carried out.

## Regeneration & Development

There are currently no plans to build any new homes in Prescot and Whiston.



## Prima Customer App

Download our app today and start managing your home at a time that suits you.

Simply search for **Prima Group** on the [App Store](#) or [Google Play Store](#).

# Neighbourhood Statistics

## Business Sectors

Below are the top three business sectors people in Prescot and Whiston are working in.

Find out more about our **Local Jobs & Training** email bulletin [here](#).



### Business Admin & Support Services

17% of local businesses are in the Business Admin and Support Services sector.



### Construction

17% of local businesses are in the Construction sector.



### Health

13% of local businesses are in the Health sector.

## Industry Sectors

Below are the top three industry sectors people in Prescot and Whiston are working in.



### Motor Trades

32% of people living in Prescot and Whiston work in Motor Trades.



### Education

32% of people living in Prescot and Whiston work in Education.



### Retail

8% of people living in Prescot and Whiston work in Retail.

## Qualifications

'Level 1' qualifications are equivalent to a single O-level, GCSE or NVQ. 'Level 2' qualifications are equivalent to five O-levels or GCSEs. 'Level 3' qualifications are equivalent to two A levels.

75

People With No Qualifications

29% of Working Age Population

35

People With Highest Qualification Level One

14% of Working Age Population

40

People With Highest Qualification Level Two

16% of Working Age Population

40

People With Highest Qualification Level Three

16% of Working Age Population



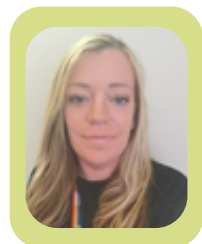
# Staff Members



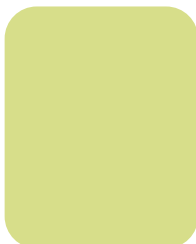
Lynne Cook  
Housing Officer



Community  
Regeneration Officer



Jenny Devon  
Tenancy Sustainment  
Officer



Income Officer

## Contacting Prima Group

 0151 452 0202

 [primagroup.org/contact-us](mailto:primagroup.org/contact-us)



Want to know  
how we're doing?

You can see how  
we're performing  
by clicking [here](#).



## Customer Board

We are looking for people to join our new customer board and help shape the way we work.

We want to put customers at the heart of everything we do and make sure their are heard when important decisions are being made about the services they receive.

For this reason, we have created the Prima Customer Board. This group will have an extremely important role to play, acting as the voice of the customer and helping to direct and shape the Group's future.

Find out more information on how you can join the Prima Customer Board [here](#).

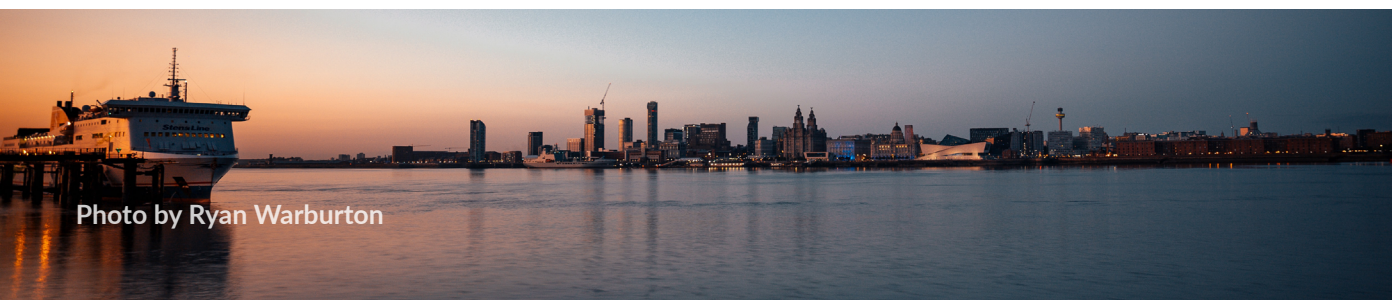


Photo by Ryan Warburton