



Picton & Wavertree

Neighbourhood Plan

If you need this document in another language, please [contact us](#).

Contents

About the Area

Community Events & Clubs

Local Facilities

Travel

Action Plan

Local Councillors

Community Action Days

Planned Improvements

Regeneration & Development

Neighbourhood Statistics

Staff Members

Customer Board

Click here to find out
about applying online
for our community
funding Bright Ideas
Fund



@prima_grp



@prima_grp



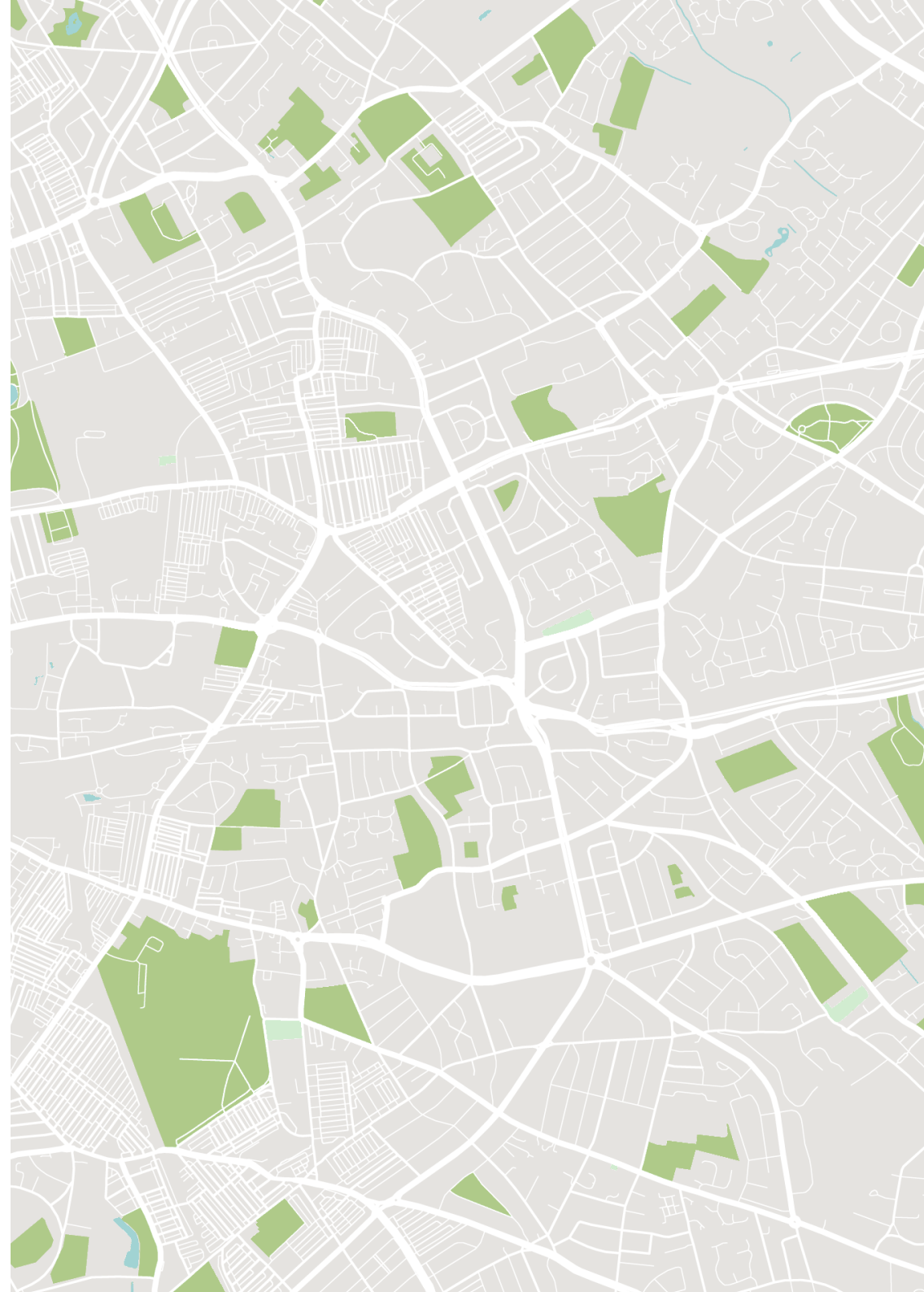
Prima Group



@PrimaGroupHousing

Sign Up to Our Local Jobs and Training Bulletin

Head to www.primagroup.org/local-jobs to sign up to our regular email bulletin and find out about jobs and training opportunities near you.



About the Area

Home to Wavertree Botanic Gardens, a 19th century public park with a Grade II-listed curator's lodge, this suburb to the south-east of Liverpool city centre has a lively high street and a technology park served by its own train station.

Our stock in the Picton and Wavertree areas consist of approximately 147 terraced houses and 100 purpose-built properties including flats and houses. It is a thriving area with most facilities easily within walking distance. The area also has very strong transport links to other areas including Liverpool City Centre.

Community Clubs & Events

- [Thingwall Community Centre](#) - Host a variety of weekly events and activities including, zumba, drama, karate and pre-school playgroup.
- [Gregson Memorial Institute](#) - Aim to increase community involvement supporting elders in the community and community resource centre facilities.
- [Smithdown Road Festival](#) - A coming together of the Smithdown Road bars and cafes to create a varied Bank Holiday weekend of entertainment
- [The Wavertree Society](#) - Aim to improve local amenities and to protect the local environment and architectural heritage.

Local Facilities

Wavertree and Picton are vibrant communities with a wide variety of local facilities. Some of these include:

- [Wavertree Playground](#) - Also known locally as The Mystery, was one of the first purpose-built public playgrounds in the United Kingdom.
- **Schools** - [Haygreen Community Primary School](#) and [Lawrence Community Primary School](#).
- [Liverpool Aquatics Centre](#) - Includes an Athletics centre, swimming pool, school holiday activities, childrens parties, first aid courses fitness suite and classes.
- [Picton Children's Centre](#) - All centres across the city have remained open and delivering services during the year, they have just had to operate in a different way. Provide facilities for baby massage, stay and play sessions, parenting classes, support groups, sensory room and adult learning courses. They provide free weekly fun activities for parents, carers and their children. [Request support here](#).
- [Wavertree Library](#)
- [Frontline Church](#) - Offers community involvement schemes and also a foodbank.
- [Wavertree One Stop Shop](#) - Picton road information and advice about council services all under one roof.



Travel

Picton and Wavertree are well connected to Liverpool City Centre and beyond.

Wavertree Technology Park train station is a quick walk away from our properties in Wavertree. This station links up with Liverpool Lime Street which has trains that travel all over the UK. Find out more [here](#).

There are also plenty of bus routes into Liverpool city centre and around the local area.

Liverpool John Lennon Airport is also just a short drive away.

Merseyrail

Arriva



Photo by Phil Nash

Action Plan

Action	Partners/Staff	Details	Outcomes
<p>Build closer links with local schools to offer increased aspirational support programmes.</p>	<ul style="list-style-type: none">• Housing Officer• Community Regeneration Officer• Local Schools	<p>Work with local schools to review bespoke aspirational programmes for young people within nearby schools</p>	<p>Increased aspirational activity to assist with the development of young people that increase their confidence and self-esteem.</p>
<p>Work closer with tenants to look at community solutions that help raise the awareness of ongoing dog fouling and work with partners to undertake a campaign that promotes more responsible dog owners</p>	<ul style="list-style-type: none">• Housing Officer• Community Regeneration Officer• Marketing & Comms Officer• Local Councillors• Liverpool City Council	<p>Look at a joined up approach that works with tenants to identify hotspots and possible solutions as well as providing resources to tackle the ongoing problem.</p>	<p>Increased pride in the local area with an increase in more responsible owners by people that live/travel through the area.</p>
<p>Work with the Community Regeneration Officer to offer a greater range of employment, learning and training opportunities that meet the needs of local people and increasing the numbers signed up to the employment, training and skills bulletin.</p>	<ul style="list-style-type: none">• Housing Officer• Community Regeneration Officer	<p>Create a proactive approach to support tenants by building the awareness of support that is available from Prima Group. Utilising new technologies such as SMS & App to help widen knowledge.</p>	<p>Increased numbers of tenants accessing support and benefiting from a wide range of tailored support.</p>

Action Plan

Action	Partners/Staff	Details	Outcomes
<p>Work closer with local partners to investigate reports of pest control issues.</p>	<ul style="list-style-type: none">• Housing Officer• Community Regeneration Officer• Liverpool City Council• Local Residents	<p>Work together with stakeholders to identify the hotspot areas, working together to tackle the issues.</p>	<p>The joined up working will offer reassurance and commitment to tenants that we would like to tackle issues, investigating joined up and innovative working practices that yield positive results and a better awareness of local responsibility.</p>

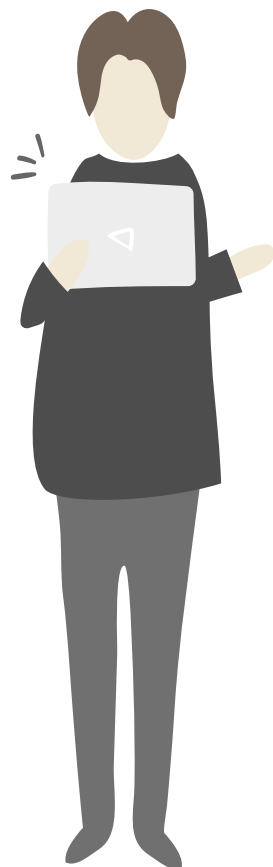
Local Councillors

A councillor's primary role is to represent their ward or division and the people who live in it. Councillors provide a bridge between the community and the council. As well as being an advocate for local residents and signposting them to the right people at the council, councillors need to keep them informed about the issues that affect them.

Councillors have to balance the needs and interests of residents, the political party they represent (if any) and the council.

Our properties in Picton and Wavertree fall into a few different constituencies so there are multiple councillors you can contact depending on where you live.

A full list of local councillors can be found [here](#).



Community Action Days

We regularly host clean-up days, estate walkabouts and community door knocks to help you remove any unwanted items from your home and to make sure we are hearing any concerns you may have about your area.

There are currently no planned community action days for Picton and Wavertree. Please keep checking our website [here](#) to find out when the next one will be.

Planned Improvements

Our planned improvements schedule has been heavily disrupted due to the ongoing COVID-19 crisis.

The majority of our programmed work was kitchen and bathroom replacements and these have now been postponed for this year now with the onset of the second wave of COVID-19.

It's likely that works planned for 20/21 will need to be phased over 21/22 and 22/2023. We will contact you directly with more information if you were due to have work carried out.

Regeneration & Development

There are currently no plans to build any new homes in Picton and Wavertree.



Prima Customer App

Download our app today and start managing your home at a time that suits you.

Simply search for **Prima Group** on the [App Store](#) or [Google Play Store](#).

Neighbourhood Statistics

Business Sectors

Below are the top three business sectors people in Picton and Wavertree are working in.

Find out more about our **Local Jobs & Training** email bulletin [here](#).



Retail

16% of local businesses are in the Retail sector.



Business Admin & Support Services

14% of local businesses are in the Business Admin and Support Services sector.



Construction

13% of local businesses are in the Construction sector.

Industry Sectors

Below are the top three industry sectors people in Picton and Wavertree are working in.



Health

27% of people living in Picton and Wavertree work in Health.



Post & Telecommunications

25% of people living in Picton and Wavertree work in Post and Telecommunications.



Retail

9% of people living in Picton and Wavertree work in Retail.

Qualifications

'Level 1' qualifications are equivalent to a single O-level, GCSE or NVQ. 'Level 2' qualifications are equivalent to five O-levels or GCSEs. 'Level 3' qualifications are equivalent to two A levels.

1005

People With No Qualifications

29% of Working Age Population

400

People With Highest Qualification Level One

12% of Working Age Population

430

People With Highest Qualification Level Two

13% of Working Age Population

685

People With Highest Qualification Level Three

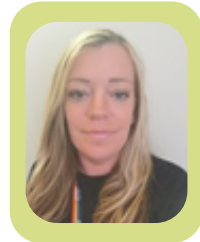
20% of Working Age Population

Staff Members

Housing Manager

Community Engagement Officer

David Seasy
Income Officer



Jenny Devon
Tenancy Sustainment Officer

Contacting Prima Group

 0151 452 0202

 primagroup.org/contact-us



Want to know how we're doing?

You can see how we're performing by clicking [here](#).



Customer Board

We are looking for people to join our new customer board and help shape the way we work.

We want to put customers at the heart of everything we do and make sure their are heard when important decisions are being made about the services they receive.

For this reason, we have created the Prima Customer Board. This group will have an extremely important role to play, acting as the voice of the customer and helping to direct and shape the Group's future.

Find out more information on how you can join the Prima Customer Board [here](#).

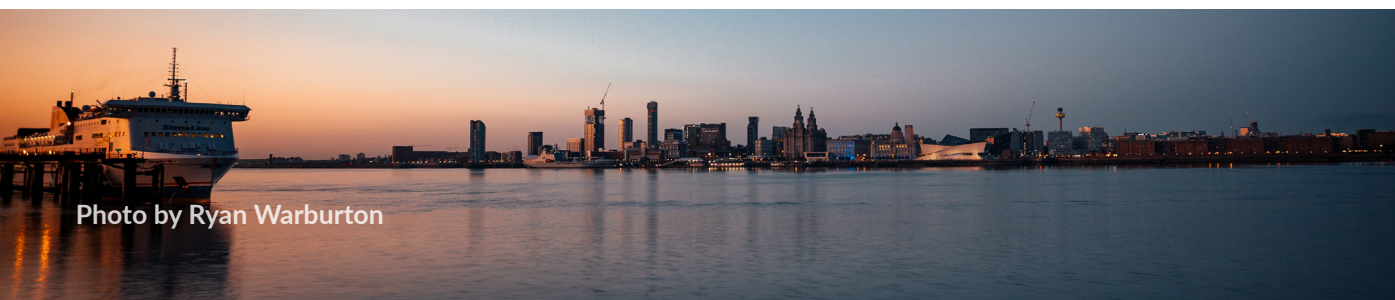


Photo by Ryan Warburton