



Bootle & Litherland

Neighbourhood Plan

If you need this document in another language, please [contact us](#).

Contents

About the Area

Community Events & Clubs

Local Facilities

Travel

Action Plan

Local Councillors

Community Action Days

Planned Improvements

Regeneration & Development

Neighbourhood Statistics

Staff Members

Customer Board

Click here to find out
about applying online
for our community
funding Bright Ideas
Fund



@prima_grp



@prima_grp



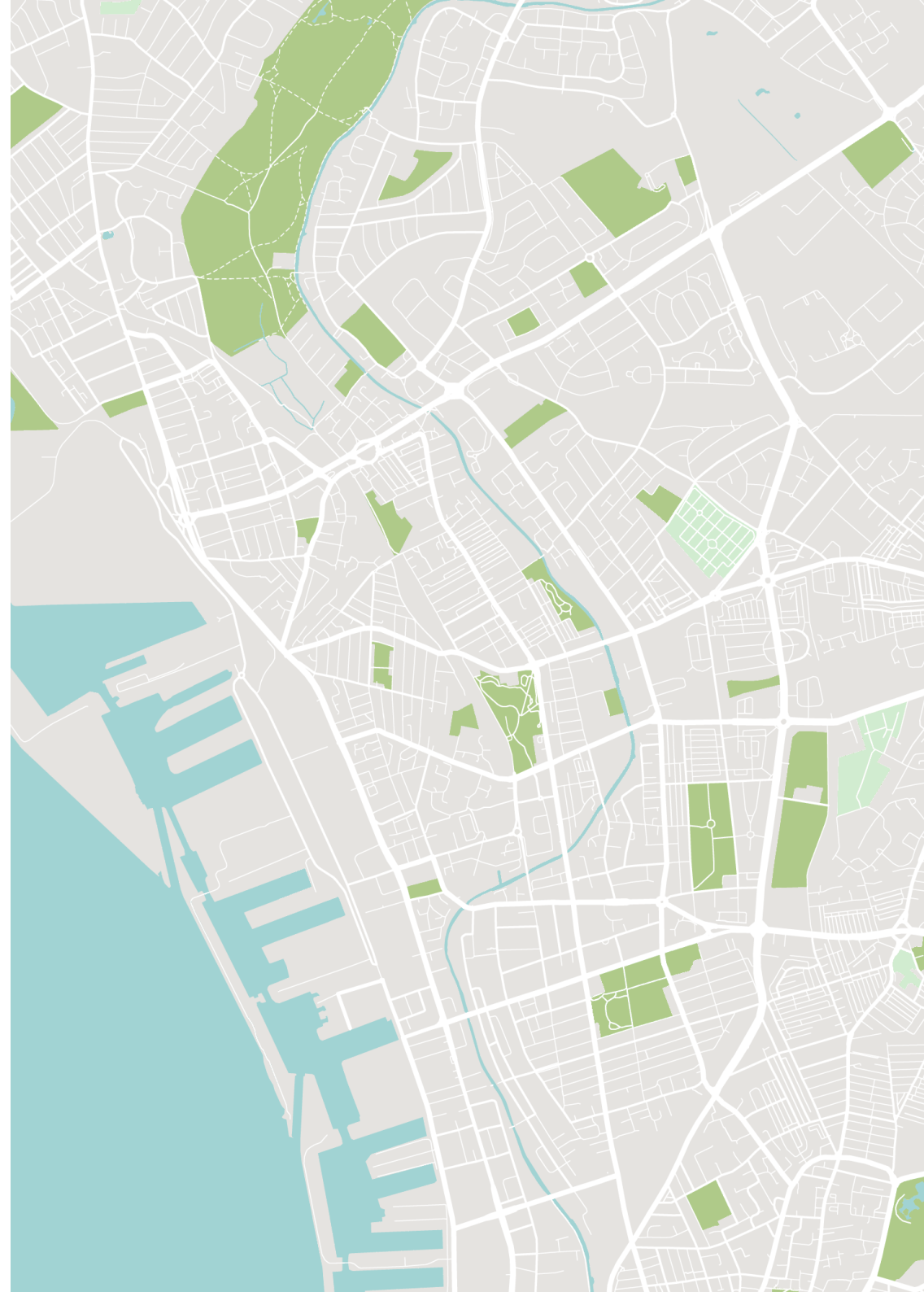
Prima Group



@PrimaGroupHousing

Sign Up to Our Local Jobs and Training Bulletin

Head to www.primagroup.org/local-jobs to sign up to our regular email bulletin and find out about jobs and training opportunities near you.



About the Area

Bootle and Litherland have everything you could need within a 15 minute drive - beaches, parks, countryside and Liverpool city centre. People there often work together through different voluntary groups to improve the lives of local residents. Due to their close proximity to Liverpool city centre, Bootle and Litherland boast some of the best transport links and amenities that the area has to offer.

Our properties in this area consist mainly of 2, 3, 4 and 5-bed purpose-built homes, with a small number of flats. We also manage two over 55s schemes in Bootle and Litherland called Chestnut Court and Maud Roberts Court.

Community Clubs & Events

- [Brunswick Youth and Community Centre](#) (also known as 'The Brunny') – A centre designed for children and young people within the community. They offer a range of services including courses on, health and wellbeing, community resilience, education, training and employment.
- [Bootle Christ Church Youth & Community Centre](#) - This is a community centre who are dedicated to providing children, young people and adults with facilities to achieve awards, make friends, develop themselves and to have fun. They offer a range of activities free of charge.
- [St Leonard's Youth & Community Centre](#) - This is community centre for all ages as well as a foodbank for many people throughout the Sefton area.

Local Facilities

- [Bootle Leisure Centre](#) - Lifestyles centre is council run Leisure centre.
- [Lifestyle Fitness Bootle](#) - Fitness club that offer fitness classes and use to the gym.
- [Hugh Baird College](#) - One of the largest providers of education and training in the Liverpool area offering over 300 courses to students, with outstanding industry connections that help students succeed.
- **Health Facilities** - Several local health centres in walking distance across Bootle and Litherland.
- **Local Primary Schools** - Bedford Primary School, Christ Church, St Monica's RC, Thomas Grey, All Saints Catholic Primary.
- **Local High Schools** - Hillside High School, The Alsop High School, Savio Salesian College, King's Leadership Academy Hawthornes, Litherland High School.
- [South Sefton Waste and Recycling Centre \(L20 4AE\)](#) - Open 1st October to 31st March from 8am to 5pm.
- **Local Parks** - There are several parks in the Bootle area, including: South Park, North Park, Derby Park. South Park has several events throughout the year.
- **Range of local shops** - The main area is The Strand Shopping Centre, this includes a variety of shops, butchers, food stores, etc.
- [Litherland Sports Park](#) - One of the finest facilities in the region, with a wide range of activities on offer for all ages.
- [Leeds-Liverpool Canal](#) - 127 miles of walking, boating, wildlife-watching and all-round relaxation.



Travel

Bootle and Litherland are well connected to Liverpool City Centre and beyond.

Bootle has two train stations nearby, Bootle New Strand and Bootle Oriel Road. Litherland has Seaforth & Litherland station. These stations all link up with Liverpool Lime Street Station which has trains that travel all over the UK. Find out more [here](#).

There are also plenty of bus routes into the city centre and further into Sefton.

Liverpool John Lennon airport is also just a 35-minute drive away.

Merseyrail

Arriva



Photo by Phil Nash

Action Plan

Action	Partners/Staff	Details	Outcomes
To undertake a rolling annual schedule of regeneration environmental events across the area, engaging relevant partners such as councillors, environmental health, housing providers and tenants to maintain and improve neighbourhood environments.	<ul style="list-style-type: none">• Housing Officer• Surveyors• Sefton Council• One Vision Housing• Local Community Groups	Clean up events with surveyors to be present to identify property concerns.	Improve visibility in Bootle and Litherland and address any issues tenants may have.
Attend multi-agency police meetings on a monthly basis.	<ul style="list-style-type: none">• Housing Officer• Merseyside Police	Merseyside Police host operational meetings for local organisations such as fire service, council and housing providers to discuss issues such as ASB, knife crime and issues that affect the local area. Attending these meetings builds good working relationships.	Build good partnerships with local services and community organisations, whilst being aware of and tackling neighbourhood issues which affect the wider community.

Action Plan

Action	Partners/Staff	Details	Outcomes
Build strong links with schools and not-for-profit groups across the area such as Brunswick Youth and Community Centre and St Leonard's Community Centre.	<ul style="list-style-type: none"> Community Regeneration Officer 	Work alongside additional Prima Group staff members to ensure our regular presence and support in assisting with local solutions across Bootle and Litherland.	Stronger links with local not-for-profit groups to ensure Prima Group continue to support tenants with a range of opportunities and can link in with local activities to be a presence in the community.
Investigate, promote and work with new food projects in the area.	<ul style="list-style-type: none"> Community Regeneration Officer 	Work closer with food projects in the local area to provide better choices for tenants that will have sustainable solutions for tenants to access low cost food.	Increased access to high quality, discounted food that can help to increase the disposable income of tenants.
Commitment to the new Poets Park Project looking to regenerate the areas.	<ul style="list-style-type: none"> Community Regeneration Officer Housing Officer Tenancy Support Officer Sefton Council Local not-for-profit organisations 	Work together with partners within the programme (such as Sefton Council and other social landlords) to create, promote and take part in progressive projects that will benefit Prima Group tenants and the wider community.	The programme will offer a longer term, joined-up regeneration perspectives to the area that will see increases in community activity, external funding and a more joined up approach.

Action Plan

Action	Partners/Staff	Details	Outcomes
Increased community walkabouts to assist with a visible presence in the neighbourhood areas, offering tenants the opportunity to get involved and help shape their communities by improving local assets.	<ul style="list-style-type: none">• Housing Officer• Community Regeneration Officer• Local Council Neighbourhood Teams	Work closely with internal teams to identify streets and neighbourhoods that could benefit from community walkabouts.	Stronger links with local not-for-profit groups to ensure Prima Group continue to support tenants with a range of opportunities and can link in with local activities to be a presence in the community.
Offer tenants the opportunity to join the new Prima Voices Facebook group as part of resident involvement measures to ensure tenants can shape the future of Prima Group.	<ul style="list-style-type: none">• Communications & Marketing Advisor• Community Regeneration Officer	Encourage tenant participation by promoting the resident involvement Facebook group and email campaigns that list the latest local jobs and news from Prima Group.	More direct feedback from people that use Prima Group's services.

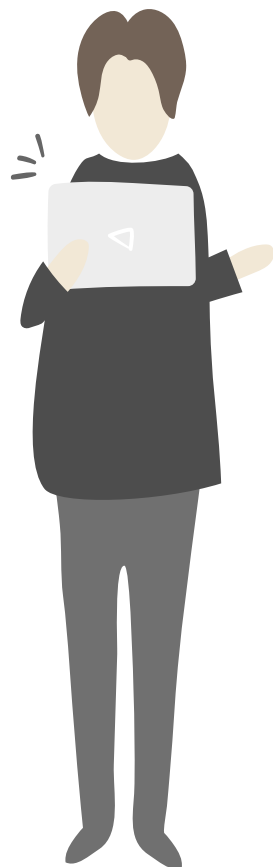
Local Councillors

A councillor's primary role is to represent their ward or division and the people who live in it. Councillors provide a bridge between the community and the council. As well as being an advocate for local residents and signposting them to the right people at the council, councillors need to keep them informed about the issues that affect them.

Councillors have to balance the needs and interests of residents, the political party they represent (if any) and the council.

Our properties in Bootle and Litherland fall into a few different constituencies so there are multiple councillors you can contact depending on where you live.

A full list of local councillors can be found [here](#).



Community Action Days

We regularly host clean-up days, estate walkabouts and community door knocks to help you remove any unwanted items from your home and to make sure we are hearing any concerns you may have about your area.

- **Bootle** | Estate Walkabout - 02/11/21
- **Bootle** | Clean-Up Day - 11/11/21

Planned Improvements

Our planned improvements schedule has been heavily disrupted due to the ongoing COVID-19 crisis.

The majority of our programmed work was kitchen and bathroom replacements and these have now been postponed for this year now with the onset of the second wave of COVID-19.

It's likely that works planned for 20/21 will need to be phased over 21/22 and 22/2023. We will contact you directly with more information if you were due to have work carried out.

Regeneration & Development

There are currently no plans to build any new homes in Bootle and Litherland.



Prima Customer App

Download our app today and start managing your home at a time that suits you.

Simply search for **Prima Group** on the [App Store](#) or [Google Play Store](#).

Neighbourhood Statistics

Business Sectors

Below are the top three business sectors people in Bootle and Litherland are working in.

Find out more about our **Local Jobs & Training** email bulletin [here](#).



Retail

16% of local businesses are in the Retail sector.



Construction

12% of local businesses are in the Construction sector.



Transport

12% of local businesses are in the Transport sector.

Industry Sectors

Below are the top three industry sectors people in Bootle and Litherland are working in.



Public Admin & Other Services

37% of people living in Bootle and Litherland work in Public Admin and Other Services.



Business Admin & Support Services

11% of people living in Bootle and Litherland work in Business Admin and Support Services.



Health

8% of people living in Bootle and Litherland work in Health.

Qualifications

‘Level 1’ qualifications are equivalent to a single O-level, GCSE or NVQ. ‘Level 2’ qualifications are equivalent to five O-levels or GCSEs. ‘Level 3’ qualifications are equivalent to two A levels.

2170

People With No Qualifications

40% of Working Age Population

920

People With Highest Qualification Level One

16% of Working Age Population

955

People With Highest Qualification Level Two

17% of Working Age Population

660

People With Highest Qualification Level Three

12% of Working Age Population

Staff Members



Lynne Cook
Housing Manager



Karl Rooney
Community
Regeneration Officer



Jenny Devon
Tenancy Sustainment
Officer

David Sesay
Income Officer

Contacting Prima Group



0151 452 0202



primagroup.org/contact-us



Want to know
how we're doing?

You can see how
we're performing
by clicking [here](#).



Customer Board

We are looking for people to join our new customer board and help shape the way we work.

We want to put customers at the heart of everything we do and make sure their are heard when important decisions are being made about the services they receive.

For this reason, we have created the Prima Customer Board. This group will have an extremely important role to play, acting as the voice of the customer and helping to direct and shape the Group's future.

Find out more information on how you can join the Prima Customer Board [here](#).



Maud Roberts Court