



# Aintree, Kirkdale, Vauxhall & Walton

## Neighbourhood Plan

If you need this document in another language, please [contact us](#).

# Contents

About the Area

Community Events & Clubs

Local Facilities

Travel

Action Plan

Local Councillors

Community Action Days

Planned Improvements

Regeneration & Development

Neighbourhood Statistics

Staff Members

Customer Board

Click here to find out  
about applying online  
for our community  
funding Bright Ideas  
Fund



@prima\_grp



@prima\_grp



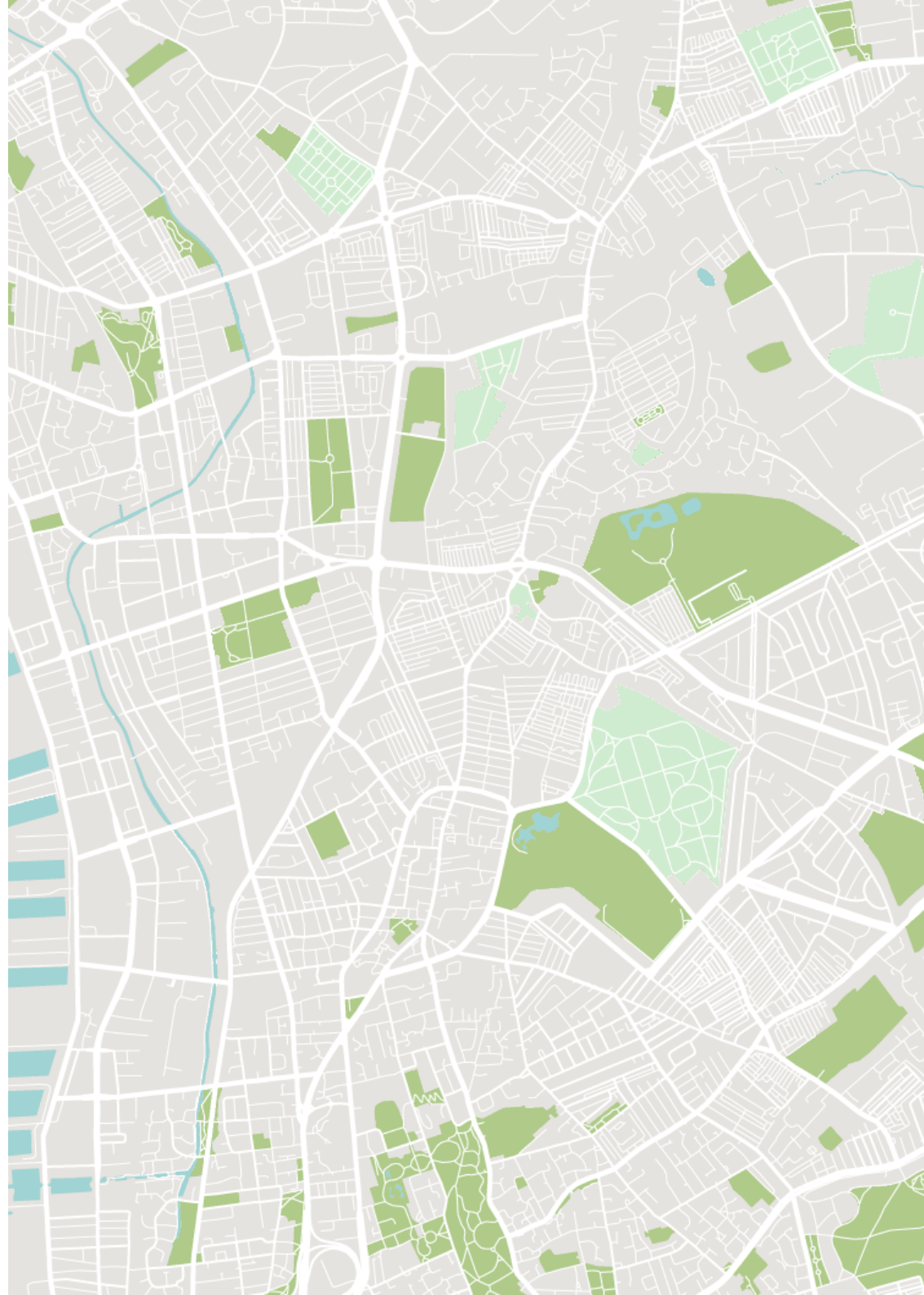
Prima Group



@PrimaGroupHousing

## Sign Up to Our Local Jobs and Training Bulletin

Head to [www.primagroup.org/local-jobs](http://www.primagroup.org/local-jobs) to sign up to our regular email bulletin and find out about jobs and training opportunities near you.



## About the Area

Our properties in Aintree and Walton consist of a mixture of two and three-bed terraced and purpose-built homes. It's a friendly place for families to grow up in and is popular with young professionals as it's a quick commute to Liverpool City Centre and Southport. The area is home to the world-famous Aintree Grand National and Everton Football Club.

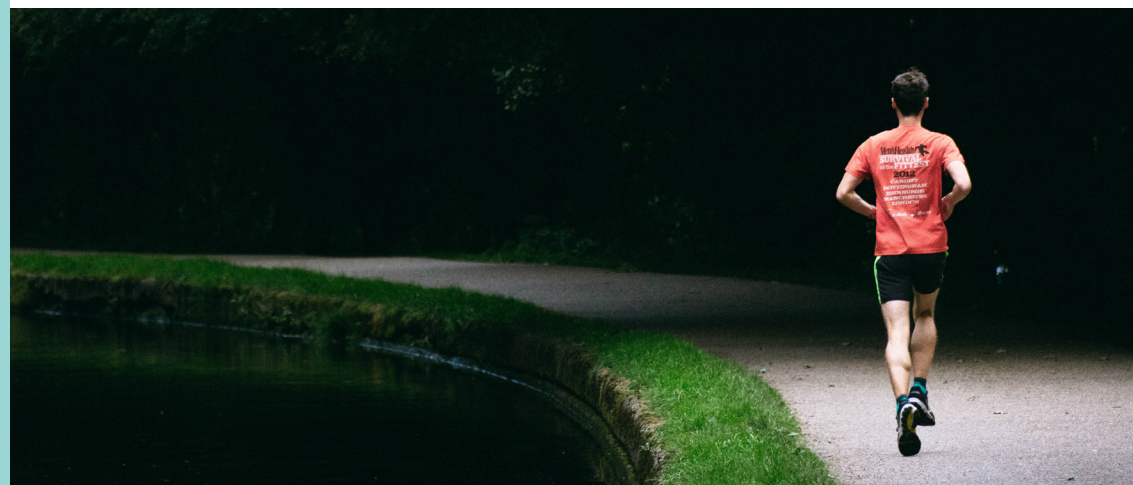
We have a variety of properties in Vauxhall and Walton ranging from 3-bed houses to one-bed flats. These properties are all ideally located within a ten-minute drive to Liverpool City Centre. The area is also part of a regeneration program that has recently benefited from investment into homes and businesses.

## Community Clubs & Events

- [Life Rooms](#) - A centre for learning, recovery, health and wellbeing serving the local and wider community. They offer a wide range of services including, employment advice and support, debt and money management services, vocational training, advice around mental health and wellbeing, ICT suites and a cafe.
- [Rotunda](#) - Community College specialising in adult education, based within five Grade II listed Georgian terrace houses in Kirkdale. Rotunda's HELP Hub offer welfare advice, educational opportunities, counselling and support with looking for a job. They also have volunteering opportunities available.

## Local Facilities

- [Lifestyles Walton Hall & Everton Park Sports](#) - Council run sports centres.
- [Walton Park](#) - Childcare services, outdoor football pitches and disabled access.
- [Everton Park](#) - Work with GPs on 12-week program to encourage people to get active and improve life expectancy.
- [Aintree University Hospital](#)
- **Local schools** - Several Local Primary & secondary schools rated outstanding and good.
- **Transport Links** - Excellent Bus and rail links into the City Centre and beyond.
- **Local parks** - Walton Hall Park facilities include a lake suitable for anglers, a 3.25km fitness trail and children's playground. Stanley Park is a grade II listed with major historic features.
- [Hetherlow Community Centre](#) - Seeks to provide open access for all residents of Walton and the surrounding areas. Host many events and activities including fitness classes, bingo and socials.
- **Range of local shops including** - Post office, local food stores, card shops, take away, hair salons and cafes are located on busy County and Walton Road. Aintree Retail Park offers a range of well-known superstores including B&Q, M&S and restaurants and bars.
- **Range of nearby supermarkets** - Aldi, Asda, Sainsbury's and Tesco.
- [Leeds to Liverpool Canal](#)



# Travel

Aintree, Kirkdale, Vauxhall and Walton are all well connected to Liverpool City Centre and beyond.

[Aintree Station](#) is on the Northern Line which has strong connections to [Liverpool Lime Street Station](#) and [Preston Station](#) which both offer journeys across the rest of the UK.

Arriva buses operate throughout Merseyside and offer local residents the chance to travel easily at a low cost.

Liverpool John Lennon airport is also only a short drive away.

Merseyrail

Arriva



Photo by Gary Butterfield

# Action Plan

Action	Partners/Staff	Details	Outcomes
<p>Consult with tenants regarding the use of land at the rear of Lambeth Street.</p>	<ul style="list-style-type: none"><li>• Housing Officer</li><li>• Community Regeneration Officer</li><li>• Local Councillors</li><li>• Tenants</li></ul>	<p>Investigate different options with to utilise the currently unused area with a view of adding value to the health and wellbeing of tenants.</p>	<p>Offer a change of use to a disused area of land that is vulnerable to fly-tipping.</p>
<p>Increase the number of applications to Prima Group's Bright Ideas Fund.</p>	<ul style="list-style-type: none"><li>• Housing Officer</li><li>• Communications &amp; Marketing Advisor</li><li>• Local Organisations</li></ul>	<p>Encourage, share and publicise the Bright Ideas Fund.</p>	<ul style="list-style-type: none"><li>• Increased the awareness of the Bright Ideas Fund.</li><li>• Assist with progression of community projects, events or activities.</li></ul>
<p>Work with the Community Regeneration Officer to offer a greater range of employment, learning and training opportunities that meet the needs of local people as well as increasing the number of people signed up to the employment, training and skills bulletin.</p>	<ul style="list-style-type: none"><li>• Housing Officer</li><li>• Community Regeneration Officer</li></ul>	<p>Create a proactive approach to supporting tenants by building the awareness of support that is available from Prima Group.</p>	<p>Increased numbers of tenants accessing support and benefiting from a wide range of tailored support.</p>

# Action Plan

Action	Partners/Staff	Details	Outcomes
Work closely with not-for-profit group, Hetherlow Community Centre.	<ul style="list-style-type: none"><li>• Housing Officer</li><li>• Community Regeneration Officer</li></ul>	Work alongside additional staff members to ensure we are providing support and assistance to local groups.	Stronger links with local not-for-profit groups to ensure we continue to support tenants with a range of opportunities.
Increase our door knocking presence in the areas	<ul style="list-style-type: none"><li>• Housing Officer</li><li>• Support Staff</li></ul>	Expand our door knocking/engagement in the area to work with tenants to encourage community involvement, resolve any issues and offer a visible presence in the area.	Offer an increased presence in the local areas to ensure tenants can work closer with Prima Group staff to ensure their views are heard and have access to up-to-date information.
Work closer with not-for-profit groups with a view of building better partnerships and increasing awareness locally with tenants.	<ul style="list-style-type: none"><li>• Housing Officer</li><li>• Support Staff</li></ul>	Engage and support local groups to expand local offers to tenants as well as ensuring tenants have better knowledge of details that these organisations offer through the Prima Group magazine and social media platforms.	Better understanding of local programmes/activities that can benefit tenants as well as a possible increase in take-up of these services by tenants

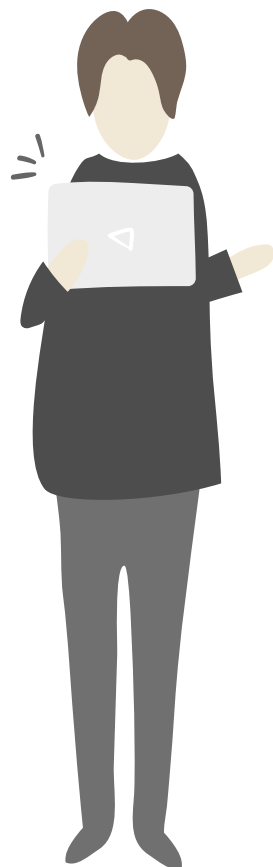
## Local Councillors

A councillor's primary role is to represent their ward or division and the people who live in it. Councillors provide a bridge between the community and the council. As well as being an advocate for local residents and signposting them to the right people at the council, councillors need to keep them informed about the issues that affect them.

Councillors have to balance the needs and interests of residents, the political party they represent (if any) and the council.

Our properties in Aintree, Kirkdale, Vauxhall and Walton fall into a few different constituencies so there are multiple councillors you can contact depending on where you live.

A full list of local councillors can be found [here](#).



## Community Action Days

We regularly host clean-up days, estate walkabouts and community door knocks to help you remove any unwanted items from your home and to make sure we are hearing any concerns you may have about your area.

There are currently no planned community action days for Aintree, Kirkdale, Vauxhall & Walton. Please keep checking back here to find out when the next one will be.

## Planned Improvements

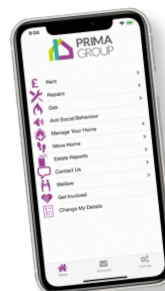
Our planned improvements schedule has been heavily disrupted due to the ongoing COVID-19 crisis.

The majority of our programmed work was kitchen and bathroom replacements and these have now been postponed for this year now with the onset of the second wave of COVID-19.

It's likely that works planned for 20/21 will need to be phased over 21/22 and 22/2023. We will contact you directly with more information if you were due to have work carried out.

## Regeneration & Development

There are currently no plans to build any new homes in Aintree, Kirkdale, Vauxhall and Walton.



## Prima Customer App

Download our app today and start managing your home at a time that suits you.

Simply search for **Prima Group** on the [App Store](#) or [Google Play Store](#).

# Neighbourhood Statistics

## Business Sectors

Below are the top three business sectors people in Aintree, Kirkdale, Vauxhall and Walton work in.

Find out more about our **Local Jobs & Training** email bulletin [here](#).



### Business Admin & Support Services

12% of local businesses are in the Business Admin & Support Services sector.



### Transport

12% of local businesses are in the Transport sector.



### Construction

10% of local businesses are in the Construction sector.

## Industry Sectors

Below are the top three industry sectors people in Aintree, Kirkdale, Vauxhall and Walton are working in.



### Health

17% of people living in Aintree, Kirkdale, Vauxhall and Walton work in the Health sector.



### Education

12% of people living in Aintree, Kirkdale, Vauxhall and Walton work in Education.



### Public Admin & Other Services

11% of people living in Aintree, Kirkdale, Vauxhall and Walton work in Public Admin & Other Services.

## Qualifications

'Level 1' qualifications are equivalent to a single O-level, GCSE or NVQ. 'Level 2' qualifications are equivalent to five O-levels or GCSEs. 'Level 3' qualifications are equivalent to two A levels.

585

People With No Qualifications

33% of Working Age Population

255

People With Highest Qualification Level One

14% of Working Age Population

310

People With Highest Qualification Level Two

17% of Working Age Population

235

People With Highest Qualification Level Three

14% of Working Age Population



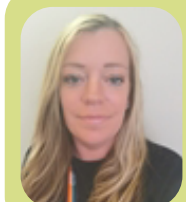
# Staff Members

Mary Threlfall  
Housing Officer



Karl Rooney  
Community  
Regeneration Officer

Michael Owen  
Income Officer



Jenny Devon  
Tenancy Sustainment  
Officer

## Contacting Prima Group

 0151 452 0202

 [primagroup.org/contact-us](mailto:primagroup.org/contact-us)



Want to know  
how we're doing?

You can see how  
we're performing  
by clicking [here](#).



## Customer Board

We are looking for people to join our new customer board and help shape the way we work.

We want to put customers at the heart of everything we do and make sure their are heard when important decisions are being made about the services they receive.

For this reason, we have created the Prima Customer Board. This group will have an extremely important role to play, acting as the voice of the customer and helping to direct and shape the Group's future.

Find out more information on how you can join the Prima Customer Board [here](#).

