



PRIMA  
GROUP

# Aigburth, Mossley Hill & Toxteth

Neighbourhood Plan

# Contents

About the Area

Community Events & Clubs

Local Facilities

Travel

Action Plan

Local Councillors

Community Action Days

Planned Improvements

Regeneration & Development

Neighbourhood Statistics

Staff Members

Customer Board

Click here to find out  
about applying online  
for our community  
funding Bright Ideas  
Fund



@prima\_grp



@prima\_grp



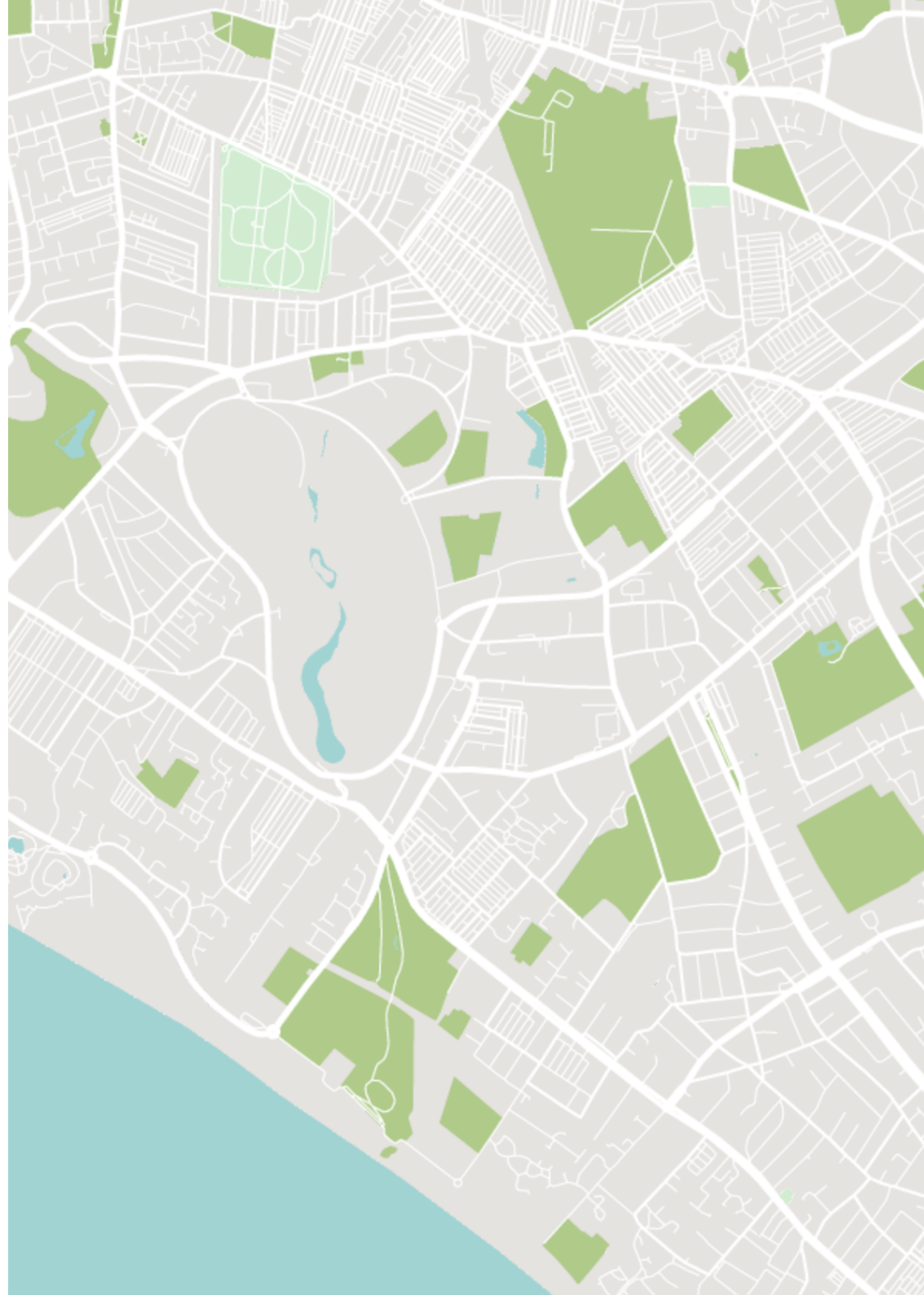
Prima Group



@PrimaGroupHousing

## Sign Up to Our Local Jobs and Training Bulletin

Head to [www.primagroup.org/local-jobs](http://www.primagroup.org/local-jobs) to sign up to our regular email bulletin and find out about jobs and training opportunities near you.



## About the Area

We own approximately 65 units in Aigburth which are mostly situated in a quiet cul-de-sac. This includes houses, general needs flats and a independent living scheme for over 55's. The close is very popular with plenty of green space nearby and easily within walking distance to Otterspool Promenade overlooking the River Mersey.

We have 72 properties in Toxteth that are a mixture of two-bed terraced houses and one and two-bed flats

We have a further seven properties near Mossley Hill train station.

## Community Clubs & Events

- [Granby Toxteth Development Trust](#) - An organisation in L8 that provide a range of projects and services to the local and wider community.
- [Kuumba Imani Millenium Centre](#) - Multi-functional convention centre that plays host to a number of community based events throughout the year.
- [The Florrie](#) - Offers a wide variety of participatory activities for people of all ages, multi-purpose event spaces available for hire and fully inclusive workspaces.
- [Coffee Morning](#) - Every Tuesday morning at Aigburth Community Church.
- [7-11s Youth Group](#) - Every Friday evening at Aigburth Community Church.

## Local Facilities

- [Aigburth Road](#) - Day to day shops, including a post office, pharmacy and convenience stores. There is also a local Tesco store.
- [Lark Lane](#) - Very vibrant bustling area with a bohemian reputation full of bars café's and bistros which can be found within a mile of our properties.
- [Fulwood Medical Centre](#) - Within walking distance to our properties and the centre includes a pharmacy.
- [Otterspool Promenade](#) - Easily within walking distance and has a riverside walk and an accompanying area of parkland. The promenade runs along the bank of the River Mersey.
- [Sefton Park](#) - Public park in Aigburth and a large area of Toxteth Park.
- [Aigburth Cricket & Bowling Club](#) - Offers the chance to watch or play seven different sports. It also offers a variety of social occasions.
- [Lodge Lane & District Credit Union](#) - Offer a range of services to its members, including saving accounts, loans and pre-paid debit cards.





# Travel

Aigburth, Mossley Hill and Toxteth are all well connected to Liverpool City Centre and beyond.

[Aigburth Station](#) is on the Northern Line which connects Liverpool City Centre with south Liverpool and Sefton. [Mossley Hill Station](#) has trains that travel to Warrington/Manchester.

Liverpool Lime Street Station has trains that travel all over the UK. Find out more [here](#).

Liverpool John Lennon airport is also only a short drive away.

Merseyrail

Arriva



Clean-Up Day at Jericho Court

# Action Plan

Action	Partners/Staff	Details	Outcomes
<p>Develop our relationship with North West Housing to look at closer working as a nearby landlord.</p>	<ul style="list-style-type: none"><li>• Housing Officer</li></ul>	<p>Create stronger links to look at building a joint approach to combating environmental issues in the community.</p>	<p>Tenants of both landlords benefit from closer working relationship and shared activities</p>
<p>Offer a greater range of employment, learning and training opportunities that meet the needs of local people.</p>	<ul style="list-style-type: none"><li>• Housing Officer</li><li>• Community Regeneration Officer</li></ul>	<p>Utilising new communication methods such as SMS, Customer App and email to help promote opportunities.</p>	<p>Increased numbers of tenants accessing support and benefiting from a wide range of tailored support.</p>
<p>Build strong links with not-for-profit groups such as Granby Toxteth Development Trust.</p>	<ul style="list-style-type: none"><li>• Housing Officer</li><li>• Community Regeneration Officer</li></ul>	<p>Work alongside additional staff members to ensure we are providing support and assistance to local groups.</p>	<p>Stronger links with local not-for-profit groups to ensure we continue to support tenants with a range of opportunities.</p>
<p>Closely monitor tree schedules with Assets Team to ensure compliance with Prima Group policies.</p>	<ul style="list-style-type: none"><li>• Housing Officer</li><li>• Asset Management Team</li></ul>	<p>Work alongside Compliance Team to undertake periodic checks on tree management schedules.</p>	<p>This information will make tenants better aware of our policies towards tree management and will reduce the number of enquires.</p>

Action	Partners/Staff	Details	Outcomes
<p>Work with local partners and Merseyside Waste and Recycling Authority (MWRA) to ensure better awareness of waste and recycling programmes for tenants.</p>	<ul style="list-style-type: none"> <li>• Housing Officer</li> <li>• Merseyside Waste Recycling Authority</li> </ul>	<p>Build stronger links with MWRA to increase responsible waste disposal and discuss with tenants ways in which positive behaviours can be encouraged.</p>	<p>Tenants will have the necessary information and awareness to dispose of their waste responsibly which will be positive for the local environment.</p>
<p>Youth Diversionary Activities</p>	<ul style="list-style-type: none"> <li>• Community Regeneration Officer (CRO)</li> <li>• Merseyside Police</li> <li>• Local Councillors</li> <li>• Not For Profit Organisations</li> </ul>	<p>Work with local youth organisations to seek and expand potential diversionary activities alongside the CRO.</p>	<p>Increase opportunities and learning for young people and reduce potential anti-social behaviour.</p>
<p>Increase health and wellbeing opportunities for tenants living in Toxteth</p>	<ul style="list-style-type: none"> <li>• Community Regeneration Officer</li> <li>• Not For Profit Organisations</li> <li>• Liverpool CCG</li> </ul>	<p>Develop programmes to expand our offer to tenants living in Toxteth and provide better health and wellbeing opportunities.</p>	<p>More diverse ways in which tenants can tackle any health and wellbeing concerns and achieve a healthier lifestyle.</p>
<p>Increase security for alleyway areas in Ritson Street and Ashbridge Street.</p>	<ul style="list-style-type: none"> <li>• Housing Officer</li> <li>• Liverpool City Council</li> <li>• Merseyside Police</li> </ul>	<p>Consult with tenants and local partners on ways to improve security within alleyway areas that can offer reassurance to tenants for appropriate usage.</p>	<p>Increased security for tenants that are dealing with fly-tipping.</p>



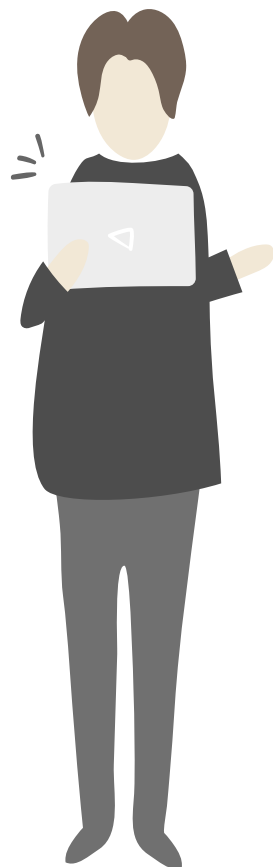
## Local Councillors

A councillor's primary role is to represent their ward or division and the people who live in it. Councillors provide a bridge between the community and the council. As well as being an advocate for local residents and signposting them to the right people at the council, councillors need to keep them informed about the issues that affect them.

Councillors have to balance the needs and interests of residents, the political party they represent (if any) and the council.

Our properties in Aigburth, Mossley Hill and Toxteth fall into a few different constituencies so there are multiple councillors you can contact depending on where you live.

A full list of local councillors can be found [here](#).



## Community Action Days

We regularly host clean-up days, estate walkabouts and community door knocks to help you remove any unwanted items from your home and to make sure we are hearing any concerns you may have about your area.

There are currently no planned community action days for Aigburth, Mossley Hill and Toxteth. Please keep checking our website [here](#) to find out when the next one will be.

## Planned Improvements

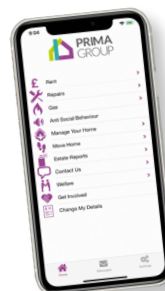
Our planned improvements schedule has been heavily disrupted due to the ongoing COVID-19 crisis.

The majority of our programmed work was kitchen and bathroom replacements and these have now been postponed for this year now with the onset of the second wave of COVID-19.

It's likely that works planned for 20/21 will need to be phased over 21/22 and 22/2023. We will contact you directly with more information if you were due to have work carried out.

## Regeneration & Development

There are currently no plans to build any new homes in Aigburth, Mossley Hill and Toxteth.



## Prima Customer App

Download our app today and start managing your home at a time that suits you.

Simply search for **Prima Group** on the [App Store](#) or [Google Play Store](#).

# Neighbourhood Statistics

## Business Sectors

Below are the top three business sectors people in Aigburth, Mossley Hill and Toxteth are working in.

Find out more about our **Local Jobs & Training** email bulletin [here](#).



### Health and Social Care

20% of people living in Aigburth, Mossley Hill and Toxteth work in Health and Social Care.



### Education

14% of people living in Aigburth, Mossley Hill and Toxteth work in Education.



### Retail

12% of people living in Aigburth, Mossley Hill and Toxteth work in Retail.

## Industry Sectors

Below are the top three industry sectors people in Aigburth, Mossley Hill and Toxteth are working in.



### Hotels & Catering

17% of people living in Aigburth, Mossley Hill and Toxteth work in Hotels and Catering.



### Business Admin & Support Services

16% of people living in Aigburth, Mossley Hill and Toxteth work in Business Admin and Support Services.



### Education

13% of people living in Aigburth, Mossley Hill and Toxteth work in the Transport.

## Qualifications

'Level 1' qualifications are equivalent to a single O-level, GCSE or NVQ. 'Level 2' qualifications are equivalent to five O-levels or GCSEs. 'Level 3' qualifications are equivalent to two A levels.

130

People With No Qualifications

24% of Working Age Population

45

People With Highest Qualification Level One

9% of Working Age Population

75

People With Highest Qualification Level Two

14% of Working Age Population

50

People With Highest Qualification Level Three

10% of Working Age Population



# Staff Members

Housing Officer

Community  
Regeneration Officer



Michael Owen  
Income Officer



Jenny Devon  
Tenancy Sustainment  
Officer

## Contacting Prima Group

 0151 452 0202

 [primagroup.org/contact-us](mailto:primagroup.org/contact-us)



Want to know  
how we're doing?

You can see how  
we're performing  
by clicking [here](#).



## Customer Board

We are looking for people to join our new customer board and help shape the way we work.

We want to put customers at the heart of everything we do and make sure their are heard when important decisions are being made about the services they receive.

For this reason, we have created the Prima Customer Board. This group will have an extremely important role to play, acting as the voice of the customer and helping to direct and shape the Group's future.

Find out more information on how you can join the Prima Customer Board [here](#).

